

MANUAL SELECTOR VALVE “MS”

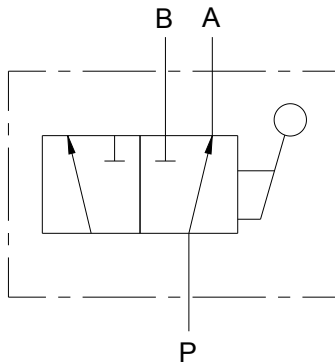


MS75-SO



MS16SAE

MS16SAE OR MS75-3/4



FEATURES:

- PRECISION GROUND IOSSO PLATED SPOOL that assures long life.
- O’RING PORTS to eliminate leakage (MS16SAE only).
- RIGID HANDLE allows customer to shift spool smoothly.
- OPTIONAL SPRING OFFSET holds spool in one active position (P to A in offset position and 3/4” NPT only).

SPECIFICATIONS:

- Rated for 3000 psi (207 bar).
- Flow rating
 - 3/4” NPT 0-30 gpm (0-113 lpm).
 - #16 SAE 0-45 gpm (0-170 lpm).
- 30-Micron filtration recommended.
- Weight
 - MS75 5.5 lbs. (2.5 kg).
 - MS16SAE 9 lbs. (4.1 kg).
- Standard port sizes.
 - 3/4” NPT all ports.
 - #16 SAE (1 5/16-12) all ports.

MATERIALS:

- High Strength Cast Iron Body (MS16SAE)
- Cast Iron Body (MS75)
- Buna N O’Rings
- IOSSO Plated Steel Spools

MS – GENERAL INFORMATION

The Brand, MS two-position manual selector valves are available in two different sizes MS75 and MS16SAE. The MS16SAE allows up to 45 gpm (170 lpm) out of either port and has a manual handle for effortless shifting of the spool. The MS75 allows up to 30 gpm (113 lpm) out of either port and has a “T” grip handle for effortless push/pull shifting of the spool. The inlet is orificed to ports A and B when the spool is being shifted from port A to port B or vice versa.

MS – COMPLETE LIST OF MODEL CODES:

MS75-3/4	3/4” NPT all ports and rated for 0-30 gpm (0-113 lpm).
MS75-SO	3/4” NPT all ports, rated for 30 gpm (0-113 lpm) and spring offset (P to A in offset position).
MS16SAE	16 SAE all ports and rated for 45 gpm (0-113 lpm).
MS16-SO	16 SAE all ports and rated for 45 gpm (0-113 lpm)) and spring offset (P to A in offset position).

MS – COMPLETE LIST OF OPTIONS AND ACCESSORIES:

LMS-K.....Seal kit for MS16SAE valve.

MS-K..... Seal kit for MS75 valve.

DIMENSIONAL DATA: inches & [millimeters]

